

Instructions for Players – Chess.com Setup

This document has been distributed to captains and placed on the tournament website. It is expected that captains distribute this to the players in their team in advance of their first matches in the tournament.

Chess.com Profile Requirements



It is important for you to set up your Chess.com profile in the right way, to aid with the broadcasting of the event and for Fair Play reasons.

Go to <https://www.chess.com/settings>

Set your first name and last name to your real first and last name

For the country setting, please choose the country that you are representing in this Olympiad.

In the specific case that you are playing for IPCA, then select “International”. See an example of that below.

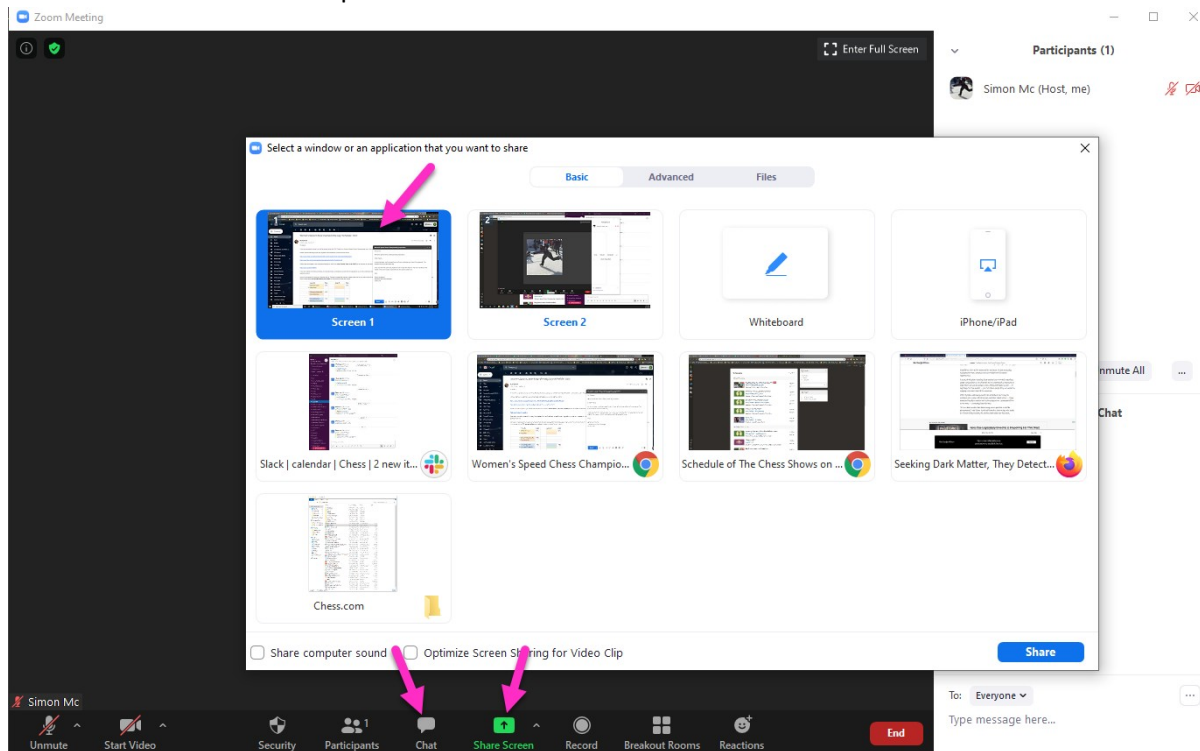
Username	AnishGiri Change
First Name	<input type="text" value="Anish"/>
Last Name	<input type="text" value="Giri"/>
Email Address	<input type="text"/>
Location	<input type="text"/>
Country	 <input type="text" value="Netherlands"/>
Language	 <ul style="list-style-type: none">IndiaIndonesiaInternationalIranIraqIrelandIsle of ManIsraelItalyJamaicaJapanJerseyJordanKazakhstanKenya
Content Language	
Landing Page	
Timezone	
OTB Rating	
About Me	

Zoom Requirements

Once you enter the Zoom call, please be sure to open the chat box. The icon is located on the middle of the Zoom toolbar, represented by the speech bubble icon.

Next, activate your screen share. Please be sure to share your entire screen, not just the browser. We should be able to see your taskbar that shows which programs are open. We may also ask to see your computer's Task Manager for confirmation.

The screenshot shows both points above:

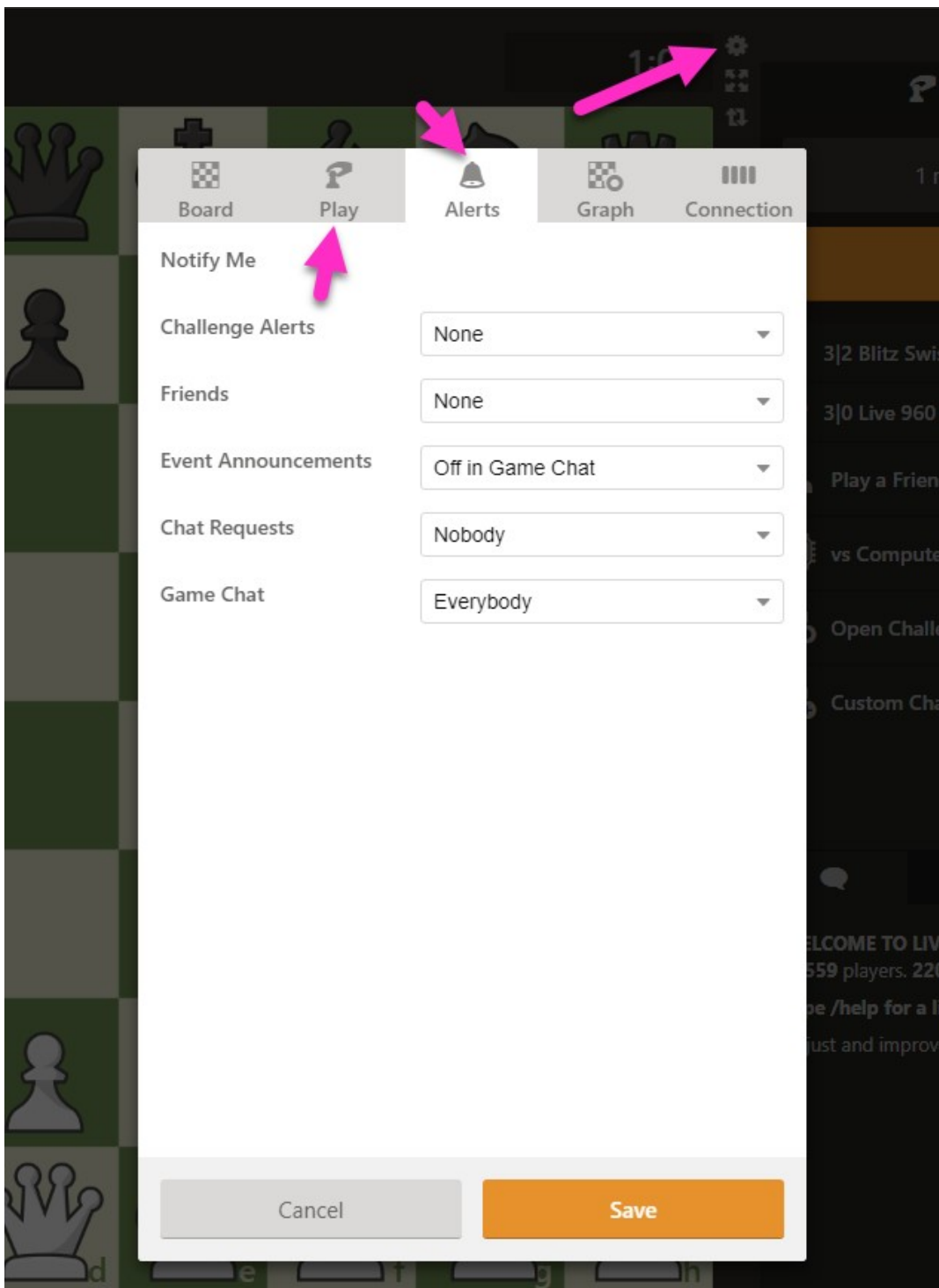


Once all this is done, Zoom is ready and you shouldn't need to interact with it aside from an occasional message from Staff between games to indicate start times. Please remain in Zoom audio at all times.

Regarding Chess.com, the main point of managing our settings is to reduce outside distractions such as chats, friend requests, and random challenges.

To do this, go into the main Live Chess page: www.chess.com/live and click the wheel icon on the top right of the board. This will open your Settings. Then click the Alerts menu, and turn everything off, including "Game Chat".

Then, click into the Play menu and turn "Allow Challenges" to Nobody. Click save and you're all set. Don't forget to click save!



Once this is done, you're ready to play and be focused on your games.