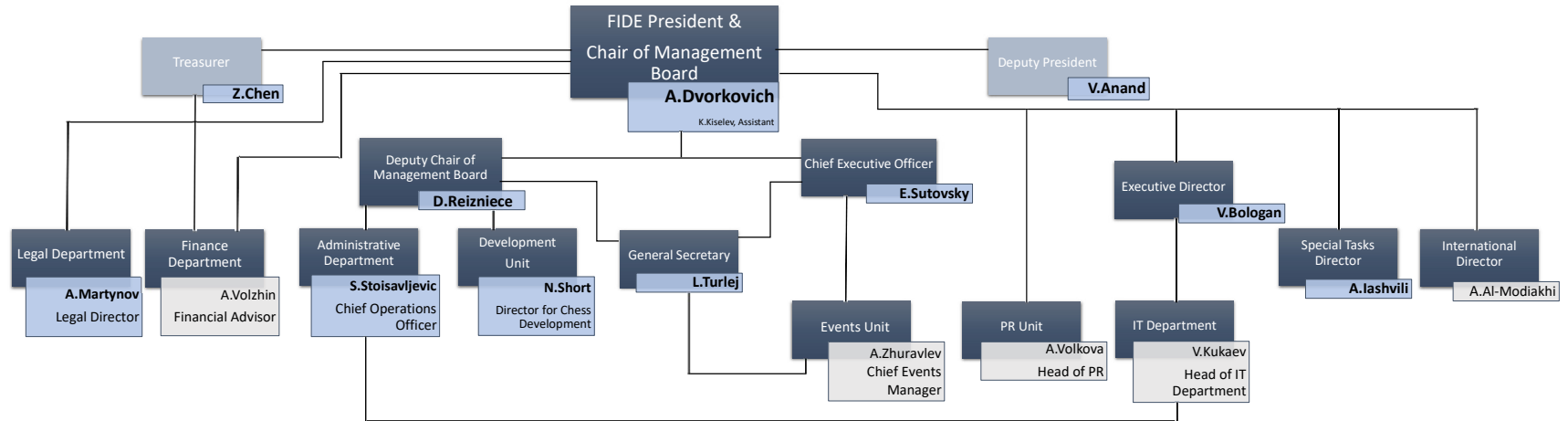


FIDE EXECUTIVE STRUCTURE



COMMISSIONS THAT ARE COORDINATED/LIASED WITH THE RESPECTIVE MEMBER OF THE EXECUTIVE UNIT

Financial Advisor liases with VER	Deputy Chair of Management Board coordinates EDU, TRG, SC, WOM, FPL, PDC	President liases with CON, EDC and coordinates ARB	Chief Executive Officer coordinates GSC, QC	Executive Director coordinates TEC, RC, MED	Special Tasks Director coordinates EVE, DIS	Deputy President & International Director coordinate ATH
---	--	--	---	---	---	---